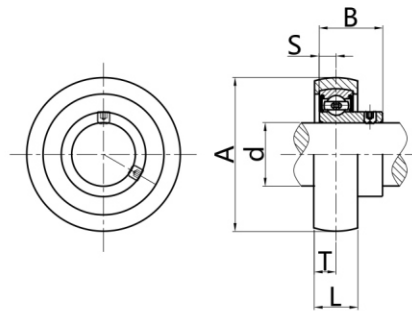
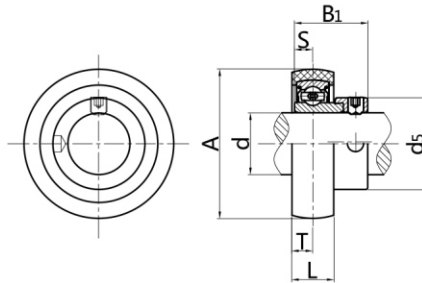


## FJ-SAR2

## FJ-SBR2



Unit NO.	Dimensions (mm / in.)							Bearing No.	Rubber Ring NO.	Weight (kg)
	d	A	L	T	B1	S	d5			
FJ-SAR201	12	47.4	17.4	8.7	28.6	6.5	28.6	FJ-SA201	R-4	0.16
201-8	1/2	1-7/8	11/16	11/32	1.1260	0.2559	1-1/8	FJ-SA201-8		
FJ-SAR202	15							FJ-SA202		
202-10	5/8							FJ-SA202-10		
FJ-SAR203	17							FJ-SA203		
203-11	2/3							FJ-SA203-11		
FJ-SAR204	20	52.4	17.4	8.7	31	7.5	33.3	FJ-SA204	R-5	0.17
204-12	3/4	2-1/16	11/16	11/32	1.2205	0.2953	1-5/16	FJ-SA204-12	R-6	0.22
FJ-SAR205	25	62.4	19.8	10.3	31	7.5	38.1	FJ-SA205		
205-14	7/8	2-29/64	25/32	13/32	1.2205	0.2953	1-1/2	FJ-SA205-14		
205-15	15/16							FJ-SA205-15		
205-16	1							FJ-SA205-16		
FJ-SAR206	30	72.4	20.6	10.3	35.7	9	44.5	FJ-SA206	R-7	0.36
206-17	1-1/16	2-27/32	13/16	13/32	1.4055	0.3543	1-3/4	FJ-SA206-17		
206-18	1-1/8							FJ-SA206-18		
206-19	1-3/16							FJ-SA206-19		
206-20	1-1/4							FJ-SA206-20		

Unit NO.	Dimensions (mm / in.)						Bearing No.	Rubber Ring NO.	Weight (kg)
	d	A	L	T	B	S			
FJ-SBR201	12	47.4	17.4	8.7	22	6	FJ-SB201	R-4	0.11
201-8	1/2	1-7/8	11/16	11/32	0.8661	0.2362	FJ-SB201-8		
FJ-SBR202	15						FJ-SB202		
202-10	5/8						FJ-SB202-10		
FJ-SBR203	17						FJ-SB203		
203-11	2/3						FJ-SB203-11		
FJ-SBR204	20	52.4	17.4	8.7	25	7	FJ-SB204	R-5	0.16
204-12	3/4	2-1/16	11/16	11/32	0.9843	0.2756	FJ-SB204-12	R-6	0.19
FJ-SBR205	25	62.4	19.8	10.3	27	7.5	FJ-SB205		
205-14	7/8	2-29/64	25/32	13/32	1.0630	0.2953	FJ-SB205-14		
205-15	15/16						FJ-SB205-15		
205-16	1						FJ-SB205-16		
FJ-SBR206	30	72.4	20.6	10.3	30	8	FJ-SB206	R-7	0.44
206-17	1-1/16	2-27/32	13/16	13/32	1.1811	0.3150	FJ-SB206-17		
206-18	1-1/8						FJ-SB206-18		
206-19	1-3/16						FJ-SB206-19		
206-20	1-1/4						FJ-SB206-20		