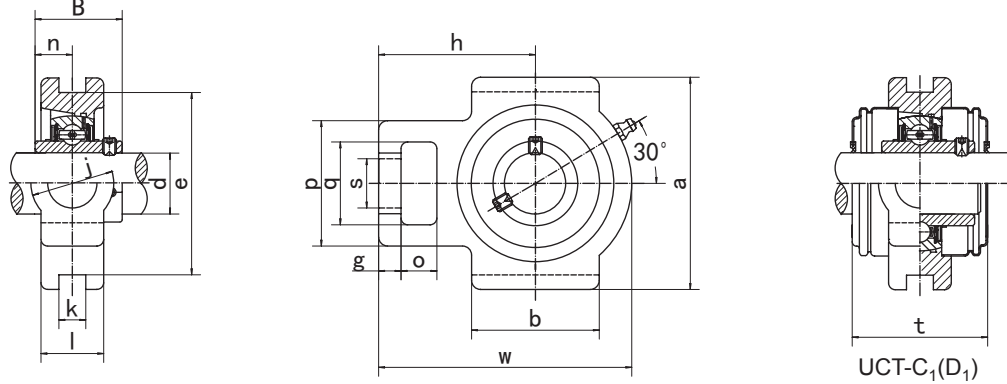


Take-up Units

UCT2 (Normal-duty)



UCT-C₁(D₁)

Unit NO.	Dimensions (mm / in.)																	Bearing No.	Housing No.	Weight (kg)
	d	o	g	p	q	s	b	k	e	a	w	j	l	h	t	B	n			
UCT201 201-8	12 5/8	16 5/8	10 25/64	51 2-1/64	32 1-1/4	19 3/4	51 2-1/64	12 15/32	76 2-63/64	89 3-1/2	94 3-11/16	32 1-1/4	21 53/64	61 2-13/32	44.5 1-3/4	31 1.2205	12.7 0.500	UC201 UC201-8	T201	0.77 0.76
UCT202 202-9 202-10	15 9/16 5/8	16 5/8	10 25/64	51 2-1/64	32 1-1/4	19 3/4	51 2-1/64	12 15/32	76 2-63/64	89 3-1/2	94 3-11/16	32 1-1/4	21 53/64	61 2-13/32	44.5 1-3/4	31 1.2205	12.7 0.500	UC202 UC202-9 UC202-10	T202	0.76 0.76 0.76
UCT203 203-11	17 11/16	16 5/8	10 25/64	51 2-1/64	32 1-1/4	19 3/4	51 2-1/64	12 15/32	76 2-63/64	89 3-1/2	94 3-11/16	32 1-1/4	21 53/64	61 2-13/32	44.5 1-3/4	31 1.2205	12.7 0.500	UC203 UC203-11	T203	0.75 0.74
UCT204 204-12	20 3/4	16 5/8	10 25/64	51 2-1/64	32 1-1/4	19 3/4	51 2-1/64	12 15/32	76 2-63/64	89 3-1/2	94 3-11/16	32 1-1/4	21 53/64	61 2-13/32	44.5 1-3/4	31 1.2205	12.7 0.500	UC204 UC204-12	T204	0.73 0.73
UCT205 205-13 205-14 205-15 205-16	25 13/16 7/8 15/16 1	16 5/8	10 25/64	51 2-1/64	32 1-1/4	19 3/4	51 2-1/64	12 15/32	76 2-63/64	89 3-1/2	97 3-13/16	32 1-1/4	24 15/16	62 2-7/16	48 1-7/8	34.1 1.3425	14.3 0.563	UC205 UC205-13 UC205-14 UC205-15 UC205-16	T205	0.80 0.84 0.83 0.81 0.80
UCT206 206-17 206-18 206-19 206-20	30 1-1/16 1-1/8 1-3/16 1-1/4	16 5/8	10 25/64	56 2-7/32	37 1-29/64	22 55/64	57 2-1/4	12 15/32	89 3-1/2	102 4-1/64	113 4-29/64	37 1-29/64	28 1-3/32	70 2-3/4	53 2-3/32	38.1 1.5000	15.9 0.626	UC206 UC206-17 UC206-18 UC206-19 UC206-20	T206	1.22 1.23 1.24 1.22 1.21
UCT207 207-20 207-21 207-22 207-23	35 1-1/4 1-5/16 1-3/8 1-7/16	16 5/8	13 33/64	64 2-33/64	37 1-29/64	22 55/64	64 2-33/64	12 15/32	89 3-1/2	102 4-1/64	129 5-5/64	37 1-29/64	30 1-3/16	78 3-5/64	59.5 2-11/32	42.9 1.6890	17.5 0.689	UC207 UC207-20 UC207-21 UC207-22 UC207-23	T207	1.57 1.63 1.60 1.57 1.54
UCT208 208-24 208-25	40 1-1/2 1-9/16	19 3/4	16 5/8	83 3-17/64	49 1-15/16	29 1-9/64	83 3-17/64	16 5/8	102 4-1/64	114 4-31/64	144 5-43/64	49 1-15/16	33 1-19/64	89 3-1/2	69 2-23/32	49.2 1.9370	19 0.748	UC208 UC208-24 UC208-25	T208	2.31 2.35 2.32
UCT209 209-26 209-27 209-28	45 1-5/8 1-11/16 1-3/4	19 3/4	16 5/8	83 3-17/64	49 1-15/16	29 1-9/64	83 3-17/64	16 5/8	102 4-1/64	117 4-39/64	144 5-43/64	49 1-15/16	35 1-3/8	87 3-27/64	69 2-23/32	49.2 1.9370	19 0.748	UC209 UC209-26 UC209-27 UC209-28	T209	2.34 2.44 2.40 2.36
UCT210 210-29 210-30 210-31 210-32	50 1-13/16 1-7/8 1-15/16 2	19 3/4	16 5/8	83 3-17/64	49 1-15/16	29 1-9/64	86 3-17/64	16 5/8	102 4-1/64	117 4-39/64	149 5-55/64	49 1-15/16	37 1-29/64	90 3-35/64	74.5 2-15/16	51.6 2.0315	19 0.748	UC210 UC210-29 UC210-30 UC210-31 UC210-32	T210	2.47 2.59 2.54 2.49 2.45
UCT211 211-32 211-33 211-34 211-35	55 2 2-1/16 2-1/8 2-3/16	25 63/64	19 3/4	102 4-1/64	64 2-1/32	35 1-3/8	95 3-3/4	22 55/64	130 5-1/8	146 5-3/4	171 6-47/64	64 2-33/64	38 1-1/2	106 4-11/64	76 3	55.6 2.1890	22.2 0.874	UC211 UC211-32 UC211-33 UC211-34 UC211-35	T211	3.74 3.89 3.83 3.79 3.72
UCT212 212-36 212-37 212-38 212-39	60 2-1/4 2-5/16 2-3/8 2-7/16	32 1-17/64	19 3/4	102 4-1/64	64 2-1/32	35 1-3/8	102 4-1/64	22 55/64	130 5-1/8	146 5-3/4	194 7-41/64	64 2-33/64	42 1-21/32	119 4-11/16	89 3-1/2	65.1 2.5630	25.4 1.000	UC212 UC212-36 UC212-37 UC212-38 UC212-39	T212	4.58 4.71 4.63 4.56 4.49
UCT213 213-40 213-41	65 2-1/2 2-9/16	32 1-17/64	21 53/64	111 4-3/8	70 2-3/4	41 1-39/64	121 4-49/64	26 1-1/32	151 5-15/16	167 6-37/64	224 8-13/16	70 2-3/4	44 1-23/32	137 5-25/64	89 3-1/2	65.1 2.5630	25.4 1.000	UC213 UC213-40 UC213-41	T213	6.60 6.69 6.60
UCT214 214-42 214-43 214-44	70 2-5/8 2-11/16 2-3/4	32 1-17/64	21 53/64	111 4-3/8	70 2-3/4	41 1-39/64	121 4-49/64	26 1-1/32	151 5-15/16	167 6-37/64	224 8-13/16	70 2-3/4	46 1-13/16	137 5-25/64	98 3-55/64	74.6 2.937	30.2 1.189	UC214 UC214-42 UC214-43 UC214-44	T214	6.74 6.95 6.85 6.75
UCT215 215-45 215-46 215-47 215-48	75 2-13/16 2-7/8 2-15/16 3	32 1-17/64	21 53/64	111 4-3/8	70 2-3/4	41 1-39/64	121 4-49/64	26 1-1/32	151 5-15/16	167 6-37/64	232 9-9/64	70 2-3/4	48 1-57/64	140 5-33/64	99 3-57/64	77.8 3.0630	33.3 1.311	UC215 UC215-45 UC215-46 UC215-47 UC215-48	T215	7.19 7.19 7.44 7.33 7.13
UCT216 216-49 216-50 216-51	80 3-1/16 3-1/8 3-3/16	32 1-17/64	21 53/64	111 4-3/8	70 2-3/4	41 1-39/64	121 4-49/64	26 1-1/32	165 6-1/2	184 7-1/4	235 9-1/4	70 2-3/4	51 2	140 5-33/64	109 4-19/64	82.6 3.2520	33.3 1.311	UC216 UC216-49 UC216-50 UC216-51	T216	8.08 8.26 8.13 8.00
UCT217 217-52 217-53 217-55	85 3-1/4 3-5/16 3-7/16	38 1-1/2	29 1-9/64	124 4-7/8	73 2-7/8	48 1-57/64	157 6-3/16	30 1-3/16	173 6-13/16	198 7-51/64	260 10-15/64	73 2-7/8	54 2-1/8	162 6-3/8	113.2 4-29/64	85.7 3.3740	34.1 1.343	UC217 UC217-52 UC217-53 UC217-55	T217	10.66 10.78 10.74 10.45
UCT218 218-56	90 3-1/2	40 1-37/64	30 1-3/16	130 5-1/8	80 3-5/32	48 1-57/64	140 5-35/64	30 1-3/16	190 7-31/64	215 8-15/32	275 10-53/64	80 3-5/32	55 2-11/64	170 6-11/16	123 4-27/32	96 3.7795	39.7 1.563	UC218 UC218-56	T218	12.19 12.30